



CATHEXIS[®]



INTEGRATION

CathexisVision's **powerful integration capability** enhances its world-class, feature-rich Video Surveillance Management software.

CathexisVision goes **beyond surveillance** to offer a sophisticated and fully integrated infrastructure and security management system that delivers maximum return on surveillance investment.

Seamless third-party systems integration, easy installation and exceptional ease-of-use make CathexisVision the preferred surveillance software solution for a wide **range of global market sectors**, including: retail, banking, mining, education, residential, commercial, healthcare, transport, logistics, and city surveillance.



CathexisVision[®]
Video Surveillance Management Solution

CathexisVision Integration

At Cathexis Technologies, we believe that the effectiveness of any system transaction can be **enhanced** by the association of synchronised video. **Integration** is one of CathexisVision's major differentiating features.

CathexisVision integrates with the world's leading brands of IP cameras. Our **range of integrations** includes access control, alarm panels, fence monitoring, fire panels, video analytics, counters, Building Management Systems, ANPR, I/O devices, point-of-sale, weighbridges, facial recognition, environmental monitoring, and thermal cameras.

Integrations enhance the control room environment. Through integrations, operators are guided to specific cameras associated with third-party systems events, **giving speedy, accurate results.**

Our integration capability is a vital way that CathexisVision goes **beyond surveillance** to provide customers with user-friendly and **powerful security solutions.**



Key Benefits

- Powerful single-user interface
- Automatic selection of viewing cameras based on third-party system events
- Rules-based actions based on video-verified event data
- Full compatibility with the world's leading third-party systems
- Added functionality through Application Programming Interface
- Advanced security applications

Generic Capabilities

- Receive and log transactions
- Associate one or more cameras with the transaction node
- Use smart filters to mine the database for transaction data and associated video footage, locally and remotely
- Create events and actions based on system transactions, such as:
 - Switch a camera to a selected monitor or panel on a video wall
 - Enable an I/O port
 - Send email or SMS
 - Send an alarm to a local or remote command centre or control room
 - Play a pre-selected audio message
 - Display notifications on a map
 - Record video to a selected database



INTEGRATION APPLICATIONS



IP Cameras

CathexisVision integrates with **hundreds of types** of IP cameras from most **major manufacturers** worldwide. Depending on the camera, capability may include:

- Manufacturer-specific SDK integration
- ONVIF support
- Universal Plug and Play (UPnP) interface
- Multiple video streams
- Synchronized and bidirectional audio
- Ability to receive event triggers from the cameras



Video Analytics

CathexisVision provides its **own analytics suite**, as well as integrations with **3rd-party analytics systems**.

Through these video analytics integrations, CathexisVision can receive **alerts** and take **actions**.



Intrusion Alarm Systems

Alarm Panel integration enables the system to **record selected cameras** and **generate alerts**. When an event is received, cameras can **automatically switch to monitors**, saving control room operators time and ensuring that the correct camera is viewed. Operators can use the **easy search function** to find specific alarms and associated footage in the database.



Fire Detection Systems

In reacting to fire alarms, operators are presented with urgent situations in which they need to make **quick, accurate decisions**. In large buildings, there could be hundreds of smoke detectors, fire detection devices, and surveillance cameras.

An **integrated solution** allows control room operators to view cameras at the location at which the fire started, because the system can **automatically select these cameras** for the operator.

In high-stress, high-risk situations, an integrated solution can help operators make **life-saving decisions**.



Access Control Systems

Cathexis has implemented access control systems **globally**. One of the many benefits to this type of integration is the ability to associate doors with databased **video footage**. The **Fast-Track feature** allows operators to follow people through multiple doors.

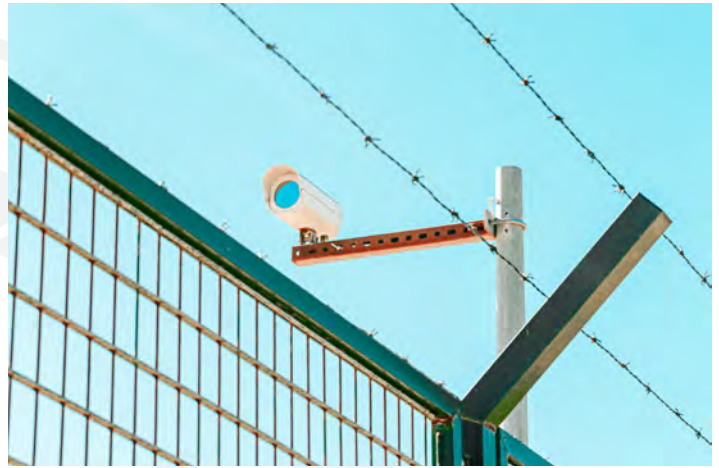




Fence Management

Fence monitoring systems typically have multiple “**zones**” set up on the fences around a perimeter. Once a fence zone alarm is received, control room operators face the challenge of knowing which **cameras to observe**.

By **automatically displaying** the surveillance cameras associated with the **fence zone**, CathexisVision’s integrated solution can significantly enhance the efficiency of the control room environment.



Weighbridges

Weighbridges are used to manage the distribution and sale of vehicle payloads. **Video verification** of the weighbridge transaction can provide operators with associated video and/or snapshots of license plates, payload, and the driver for identification purposes. This makes it **easy to find** a disputed or suspicious transaction and access the related information.



Barcode Readers

The **logistics sector** benefits from the integration of barcode readers, enabling video verification of parcels scanned into and out of warehouses. Searching the database for barcodes can **resolve disputes** over damaged or missing goods, and users are automatically presented with the associated footage.



Point-of-Sale Systems

Integration can solve a common problem in the **retail sector**: “sweet-hearting”, or the collusion between till operators and shoplifters. With **synchronised video verification**, unusual transactions or anomalies in barcode scans can be identified, thereby addressing theft through an **integrated video/POS solution**.



Money Counters

Money counter integration has been used successfully for **Banking** and CIT (**Cash-In-transit**) customers.



Environmental Monitoring

Environmental monitoring systems are used in data centres or other applications where “**uptime**” is **critical**. The CathexisVision system can receive events from these systems to create alerts for operators.





Thermal Cameras

Cathexis has integrated with thermal cameras to create **temperature alert capability** as well as the ability to **monitor areas** where there is **little or no visible light**. Temperature monitoring can provide a **visual representation** of temperature, and **trigger alerts**. It is fully **customisable** - for example, by configuring zones or taking the temperature of facial landmarks using facial recognition. In the **COVID-19 pandemic**, thermal integration has provided fast, reliable, contact-free temperature monitoring.



Facial Recognition

CathexisVision integrates with third-party systems to produce **accurate facial recognition**.

Facial recognition can quickly confirm personal identity without the need for passwords or fingerprints.

By **identifying key people** without the need for laborious protocols, facial recognition helps to ensure security and efficiency.



Number Plate Recognition

Automatic Number Plate Recognition supports security across many market sectors. CathexisVision integrates with **three categories of ANPR engines**: third-party ANPR algorithms, ANPR Cameras, and built-in ANPR engines.

Third-party algorithms and ANPR cameras send through **triggers** to CathexisVision, while the built-in engine is **fully incorporated** into CathexisVision. ANPR is useful in **confirming personal identity**, monitoring thoroughfare and ensuring that only authorised vehicles are allowed in specific areas.



Because the automatic association of synchronised video can enhance any system, we are continually adding integration options to CathexisVision.

Available Integrations

Technology Partners



info@cathexisvideo.com

CathexisVision
Video Surveillance Management Solution



www.cathexisvideo.com

ver-2020-10